

HMH PROJECT UPDATE - June 2010

Samaritan Medical Center

San Jose



1570 Oakland Road San Jose, CA 95131
(408) 487-2200 www.HMHca.com



Samaritan Medical Center Breaks Ground

HMH is a proud member of the design team creating the most modern, technically advanced medical facility built for the Samaritan Medical Center. The project consists of a new four-story, 74,800 square-foot medical office building along with an adjacent five-level, 276-car parking structure that will connect with the existing parking structure on the site. Situated at the corner of Samaritan Drive and Bascom Avenue, this new facility provides an architectural cornerstone for the community. This project is part of Samaritan Medical Center's strategic plan to expand and create a high-tech ambulatory surgery center and a comprehensive cancer center.

The Silicon Valley Business Journal did a recent article regarding the new center. <http://sanjose.bizjournals.com/sanjose/stories/2010/05/17/focus1.html>

HMH provided a multitude of Professional Services for the project including Land Use Entitlement, Civil Engineering, Landscape Architecture, Land Surveying, Joint Trench Design and Construction Staking.

LAND USE ENTITLEMENT

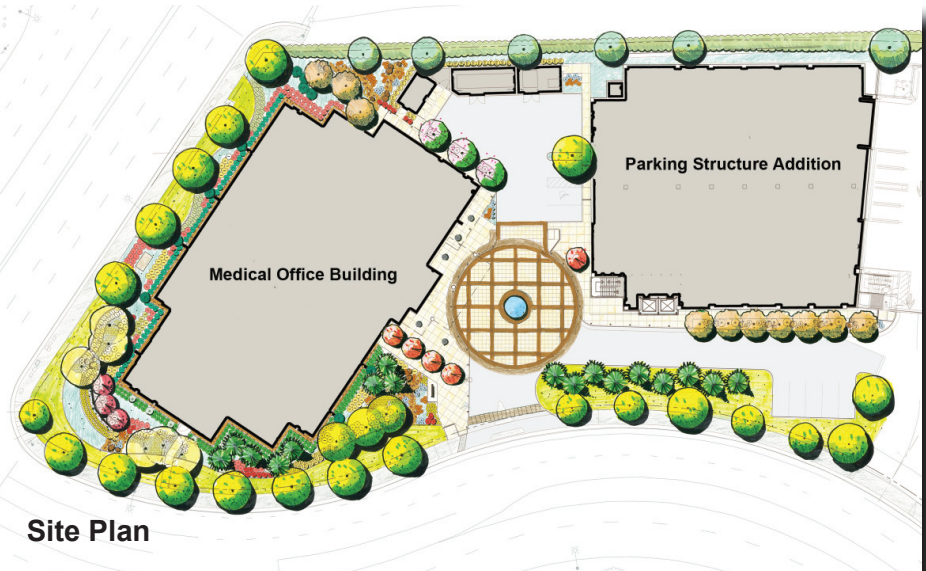
Starting with a General Plan Amendment, HMH assisted with the approval of the site plan and allowed for the building height to reach 70 feet. Subsequent planning approvals included a Planned Development Re-Zoning and a Planned Development Permit.

CIVIL ENGINEERING

HMH produced preliminary design and construction documents for grading, paving and utilities. Special attention was required to meet the perimeter constraints of the adjacent existing roadways, including Highway 85, save existing trees and design for the relocation and integration of the existing site utility systems.

LANDSCAPE ARCHITECTURE

The design for this cornerstone building required the appropriate level of landscaping to provide a vibrant, lush, sophisticated appearance while maintaining integration with the existing landscaping already in place on the campus. HMH produced preliminary and final landscape construction documents that utilized low water-use plants, water-efficient irrigation design



Site Plan

and the use of bio-retention filters within the landscape to compliment the green building practices incorporated in the project.

LAND SURVEYING AND CONSTRUCTION STAKING

HMH performed topographic and boundary surveys during the design phase of the project. We continue to provide support during construction with construction staking and construction administration services.

Construction is currently underway with a scheduled opening in spring 2011.



Building Elevation

Active Members in the Following Organizations

